

# Gillieston Public School - Stage 1 Construction Works

## Construction works includes:

- Site Establishment
- Neighbouring & Council storm water works
- All works required for the Completion of the new Learning Building & required decanting
- All works required for the Completion of the new Pre-School
- Bus Bay & Gillieston Rd & Eastern sections of the North View St K&D public domain works

## Key Notes:

1. Staff will be utilising the existing car park adjacent to Building D (Brick Cottage) on Gillieston Road during Stage 1 Construction Works
2. School Access on Northview Street is retained across Stage 1 Services corridor

## CONSTRUCTION LEGEND

- Easement - This area is in possession of the Contractor. However, works in this area cannot be commenced until neighbouring & council stormwater works are complete
- In Construction & Site in possession with the contractor
- Existing and Operational
- Completed and Occupied
- Contractor Site Access
- School Access
- Hoarding Line
- Staff car park
- Remediation - This area is required to be remediated and made good prior to Hall and OOSH demountable installation

## TECHNICAL OVERLAY

- Bus Stop
- Carparking
- Kiss n Drop
- Bicycles and Scooters
- Crossings and School Zones
- Maintenance and Delivery Access

## LEGEND

- FUTURE PROPOSED ROADS
- CAR PARKING
- KISS N DROP & QUEUING ZONE
- BICYCLE / SCOOTER PARKING
- MAINTENANCE / DELIVERY ACCESS
- ACTIVE TRANSPORT LINKS
- MULTIDIRECTIONAL CAR ACCESS
- NARROW CUL DE SAC
- BUSBAY DROP OFF
- ENTRY

## At the end of Stage 1:

- Neighbouring & Council storm water works are completed.
- New Learning Building completed and handover & required decanting is complete.
- New Pre-School completed and handover.
- Bus Bay & Gillieston Rd & Eastern sections of the North View St K&D public domain works completed and handover

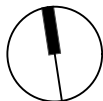
4814  
DA3502

RevA 17.09.24

Issue 01 dated January 2025

0m 10 20 30 40 50

1:1000  
@A3



SHAC

Nominated Architect Justin Hamilton (6160) | ABN 32 131 584 846

# **Gillieston Public School - Stage 2 Construction Works**

*Some parts of Stage 2 works would occur simultaneously*

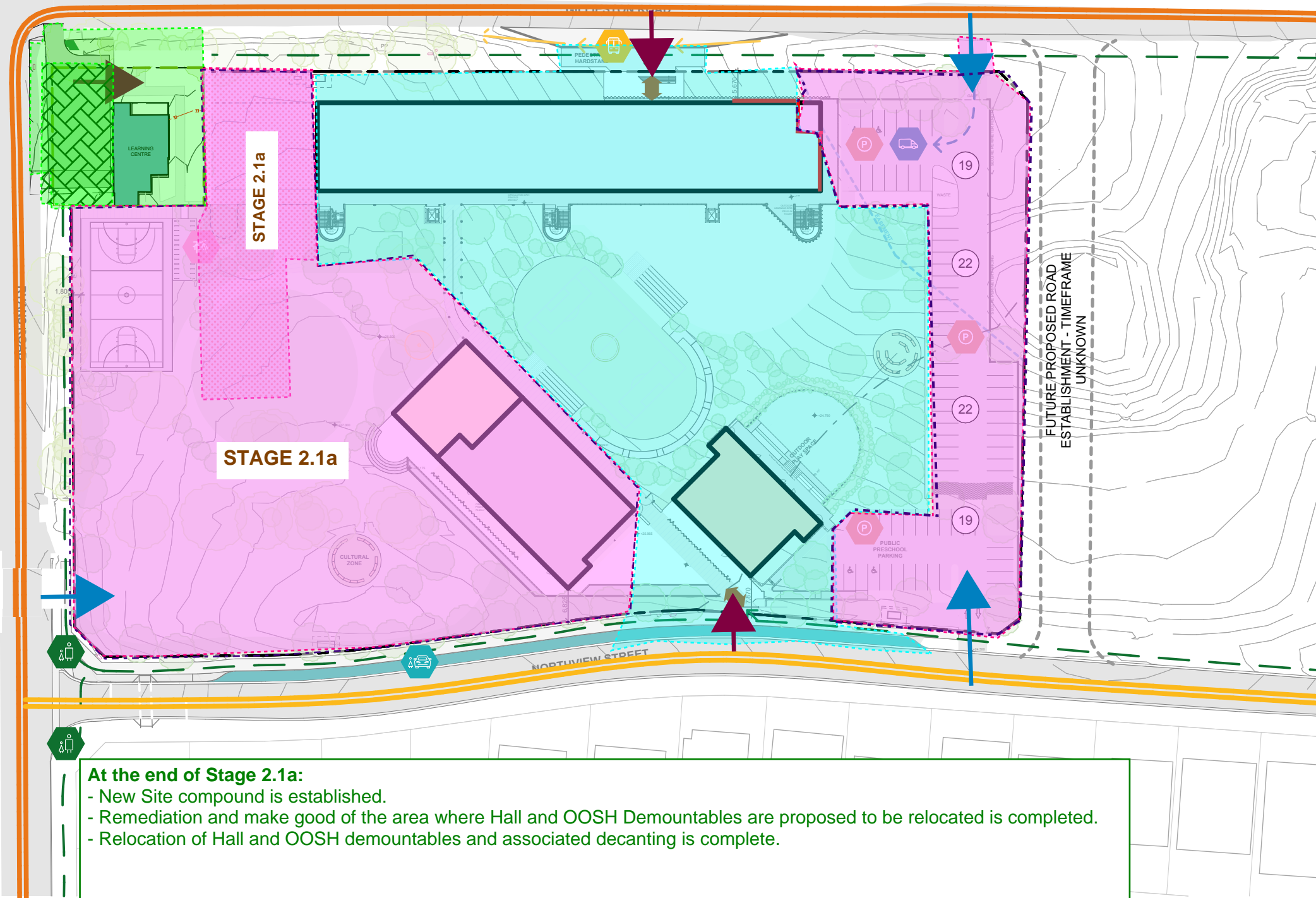
# Gillieston Public School - Stage 2.1a Construction Works

**Construction works include:**










- Site shed relocation.
- Remediation and make good of the area where Hall and OOSH Demountables are proposed to be relocated.
- Relocation of Hall and OOSH demountables and associated decanting to facilitate construction of New Hall and OOSH Building.

### Key Notes:







1. Staff will be utilising the existing car park adjacent to Building D (Brick Cottage) on Gillieston Road during Stage 2.1a Construction Works






### CONSTRUCTION LEGEND

-  Easement - This area is in possession of the Contractor. However, works in this area cannot be commenced until neighbouring & council stormwater works are complete
-  In Construction & Site in possession with the contractor
-  Existing and Operational
-  Completed and Occupied
-  Contractor Site Access
-  School Access
-  Hoarding Line
-  Staff car park
-  Remediation - This area is required to be remediated and made good prior to Hall and OOSH demountable installation

## TECHNICAL OVERLAY

-  **Bus Stop**
-  **Carparking**
-  **Kiss n Drop**
-  **Bicycles and Scooters**
-  **Crossings and School Zones**
-  **Maintenance and Delivery Access**

## LEGEND

-  - FUTURE PROPOSED ROADS
-  - CAR PARKING
-  - KISS N DROP & QUEUING ZONE
-  - BICYCLE / SCOOTER PARKING
-  - MAINTENANCE / DELIVERY ACCESS
-  - ACTIVE TRANSPORT LINKS
-  - MULTIDIRECTIONAL CAR ACCESS
-  - NARROW CUL DE SAC
-  - BUSBAY DROP OFF
-  - ENTRY

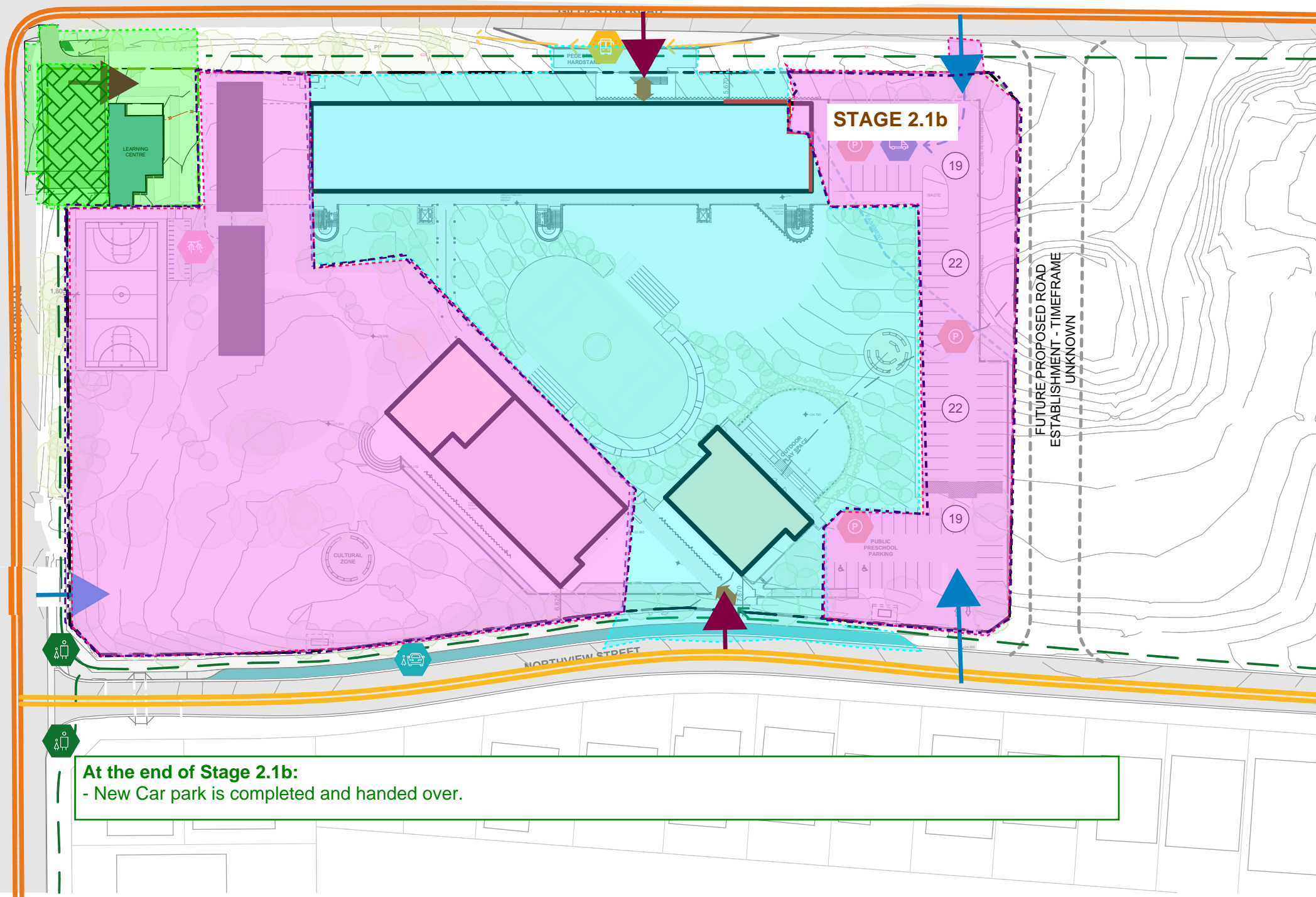


# Gillieston Public School - Stage 2.1b Construction Works

**Construction works include:**  
- Construction of New Car park

**Key Notes:**

1. Staff will be utilising the existing car park adjacent to Building D (Brick Cottage) on Gillieston Road during Stage 2.1b Construction Works



## CONSTRUCTION LEGEND

- Easement** - This area is in possession of the Contractor. However, works in this area cannot be commenced until neighbouring & council stormwater works are complete
- In Construction & Site in possession with the contractor**
- Existing and Operational**
- Completed and Occupied**
- Contractor Site Access**
- School Access**
- Hoarding Line**
- Staff car park**
- Remediation** - This area is required to be remediated and made good prior to Hall and OOSH demountable installation

## TECHNICAL OVERLAY

- Bus Stop**
- Carparking**
- Kiss n Drop**
- Bicycles and Scooters**
- Crossings and School Zones**
- Maintenance and Delivery Access**

## LEGEND

- FUTURE PROPOSED ROADS**
- CAR PARKING**
- KISS N DROP & QUEUING ZONE**
- BICYCLE / SCOOTER PARKING**
- MAINTENANCE / DELIVERY ACCESS**
- ACTIVE TRANSPORT LINKS**
- MULTIDIRECTIONAL CAR ACCESS**
- NARROW CUL DE SAC**
- BUSBAY DROP OFF**
- ENTRY**

# Gillieston Public School - Stage 2.2 Construction Works

## Construction works include:

- Completion & Handover of New Hall and OOSH Building
- Completion of landscaping
- Completion of Public Domain Works North View St western section Kiss n Drop

## Key Notes:

1. Staff will be utilising the existing car park adjacent to Building D (Brick Cottage) on Gillieston Road and the new car park during Stage 2.2 Construction Works

- Easement** - This area is in possession of the Contractor. However, works in this area cannot be commenced until neighbouring & council stormwater works are complete
- In Construction & Site in possession with the contractor**
- Existing and Operational**
- Completed and Occupied**
- Contractor Site Access**
- School Access**
- Hoarding Line**
- Staff car park**
- Remediation** - This area is required to be remediated and made good prior to Hall and OOSH demountable installation

## TECHNICAL OVERLAY

- Bus Stop**
- Carparking**
- Kiss n Drop**
- Bicycles and Scooters**
- Crossings and School Zones**
- Maintenance and Delivery Access**

## LEGEND

- FUTURE PROPOSED ROADS**
- CAR PARKING**
- KISS N DROP & QUEUING ZONE**
- BICYCLE / SCOOTER PARKING**
- MAINTENANCE / DELIVERY ACCESS**
- ACTIVE TRANSPORT LINKS**
- MULTIDIRECTIONAL CAR ACCESS**
- NARROW CUL DE SAC**
- BUSBAY DROP OFF**
- ENTRY**

STAGE 2.2

## At the end of Stage 2.2:

- New Hall and OOSH Building completed and handed over
- landscaping completed and handed over.
- Public Domain Works North View St western section Kiss n Drop completed and handed over.

FUTURE PROPOSED PEDESTRIAN CROSSING

FUTURE PROPOSED ROAD ESTABLISHMENT - TIMEFRAME UNKNOWN

NORTHVIEW STREET





# Gillieston Public School - Stage 2.3 Construction Works

## Construction works include:

- Removal of relocated demountables
- Completion of landscaping including Basketball court

## Key Notes:

1. Staff will be utilising the new car park during Stage 2.3 Construction Works

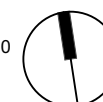
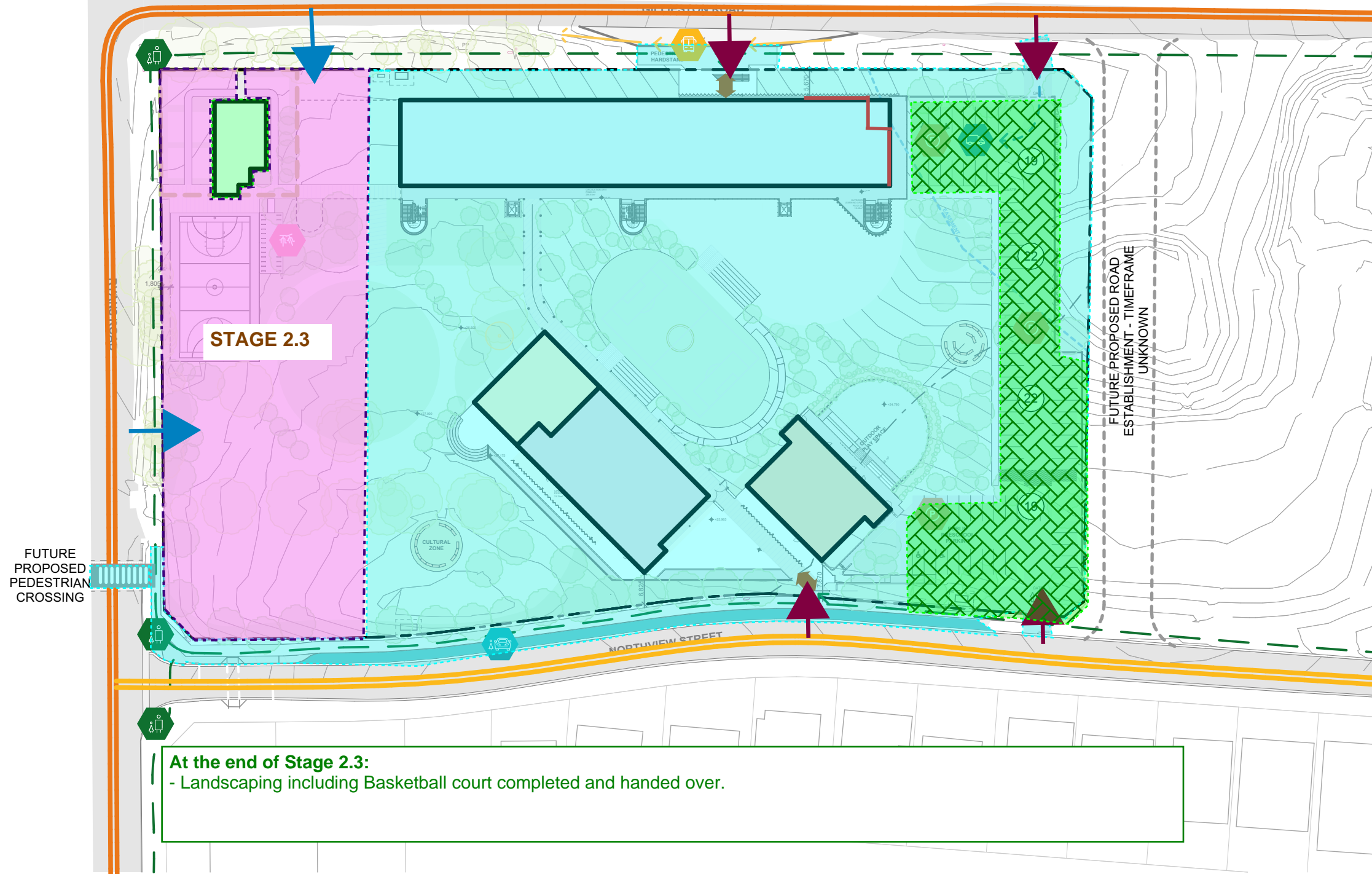
- Easement** - This area is in possession of the Contractor. However, works in this area cannot be commenced until neighbouring & council stormwater works are complete
- In Construction & Site in possession with the contractor**
- Existing and Operational**
- Completed and Occupied**
- Contractor Site Access**
- School Access**
- Hoarding Line**
- Staff car park**
- Remediation** - This area is required to be remediated and made good prior to Hall and OOSH demountable installation

## TECHNICAL OVERLAY

- Bus Stop**
- Carparking**
- Kiss n Drop**
- Bicycles and Scooters**
- Crossings and School Zones**
- Maintenance and Delivery Access**

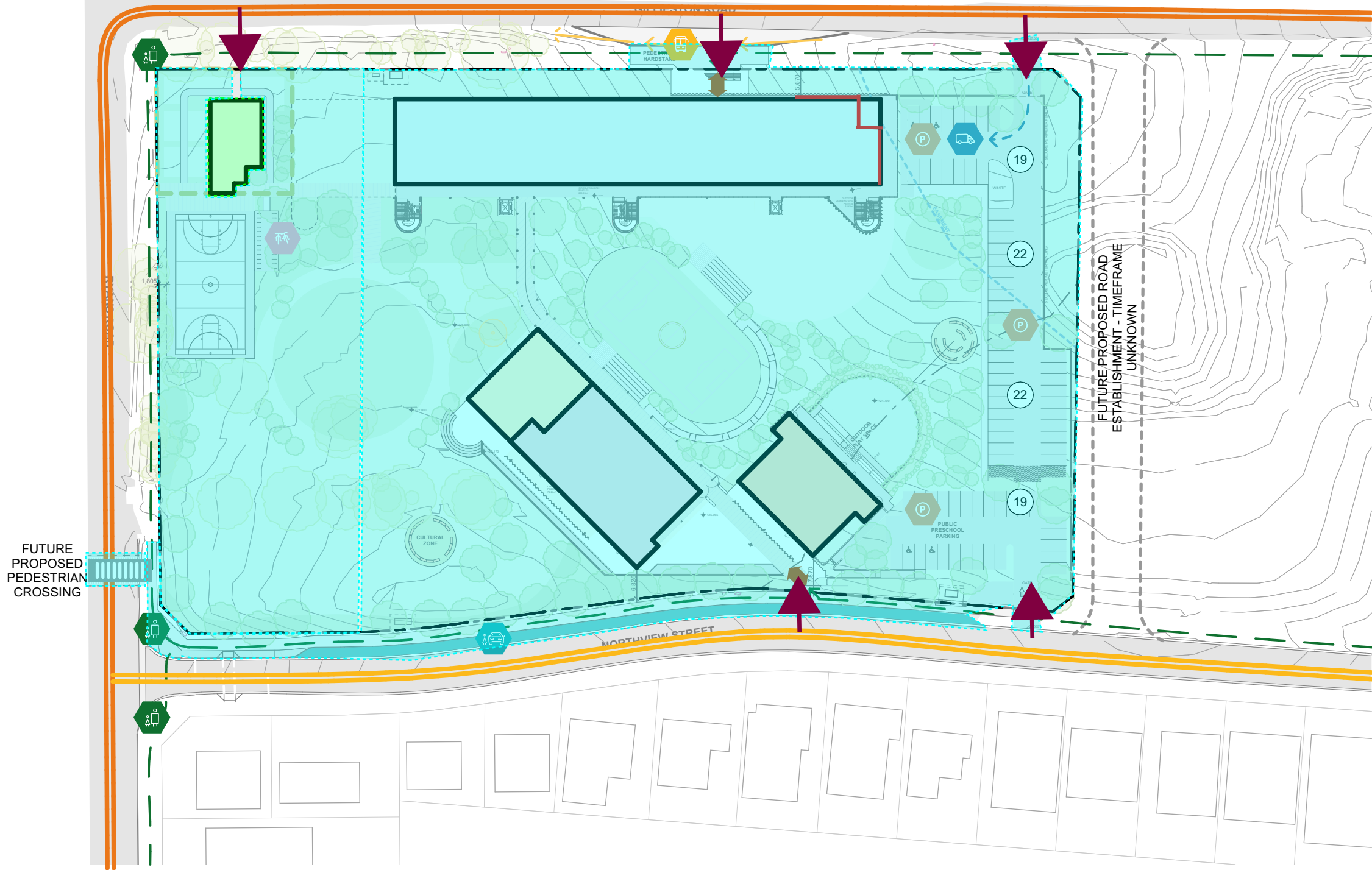
## LEGEND

- FUTURE PROPOSED ROADS**
- CAR PARKING**
- KISS N DROP & QUEUING ZONE**
- BICYCLE / SCOOTER PARKING**
- MAINTENANCE / DELIVERY ACCESS**
- ACTIVE TRANSPORT LINKS**
- MULTIDIRECTIONAL CAR ACCESS**
- NARROW CUL DE SAC**
- BUSBAY DROP OFF**
- ENTRY**



Drawing and design © SHAC Pty Ltd. The signed control copy of this drawing is held by SHAC Pty Ltd. | Ref: P\4800\4814\_Maitland Gillieston New PS\500 CAD Graphics and Models\515 Sketch Design\Schematic Design Report\4814.515.14 Gillieston PS Concept Design SDR.pln date:23/10/2024 time: 2:43 PM  
SINSW INFORMATION CONTAINER REF: GPS-SHAC - -M2-A-DA3502-Transport and Parking

# Gillieston Public School - Completion



## CONSTRUCTION LEGEND

- Easement - This area is in possession of the Contractor. However, works in this area cannot be commenced until neighbouring & council stormwater works are complete
- In Construction & Site in possession with the contractor
- Existing and Operational
- Completed and Occupied
- Contractor Site Access
- School Access
- Hoarding Line
- Staff car park
- Remediation - This area is required to be remediated and made good prior to Hall and OOSH demountable installation

## TECHNICAL OVERLAY

- Bus Stop
- Carparking
- Kiss n Drop
- Bicycles and Scooters
- Crossings and School Zones
- Maintenance and Delivery Access

## LEGEND

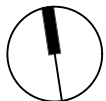
- FUTURE PROPOSED ROADS
- CAR PARKING
- KISS N DROP & QUEUING ZONE
- BICYCLE / SCOOTER PARKING
- MAINTENANCE / DELIVERY ACCESS
- ACTIVE TRANSPORT LINKS
- MULTIDIRECTIONAL CAR ACCESS
- NARROW CUL DE SAC
- BUSBAY DROP OFF
- ENTRY

4814  
DA3502  
RevA 17.09.24

Issue 01 dated January 2025

0m 10 20 30 40 50

1:1000  
@A3



SHAC

Nominated Architect Justin Hamilton (6160) | ABN 32 131 584 846